

Sunday, April 25, 2021

Fourth Sunday of Easter

SMALL GROUP WORSHIP SERVICE LITURGY

The entire worship service will be streamed live starting at 9:30am at
<http://www.firsthamilton.ca/live>

*Worship Sourcebook Litanies - Reprinted by permission from The Worship Sourcebook, Second Edition,
© 2013, Faith Alive Christian Resources*

Music: Katrina's Team

Preaching: Hayden Regeling

Liturgical planning: Marissa Mulder

WORSHIP SERVICE 9:30 am

*You are invited to rise in body or spirit

Prelude: *Hosanna (Praise Is Rising)* (CCLI Song #2430948 / CCLI License #2024198)

GOD GATHERS US

Welcome

Opening Prayer

Call to Worship: *Psalm 57:8-11, NIV*

Leader: Awake, my soul! Awake, harp and lyre!

People: I will awaken the dawn.

Leader: I will praise you, Lord, among the nations;

People: I will sing of you among the peoples.

Leader: For great is your love, reaching to the heavens; your faithfulness reaches to the skies.

People: Be exalted, O God, above the heavens; let your glory be over all the earth.

* **Song: Hymnal #593 Lord Most High** (CCLI Song #2037688 / CCLI License #2024198)

* Greetings:

The Peace of Christ be with you!

And also with you!

* **Song: Hymnal #611 Mighty To Save** (CCLI Song #4591782 / CCLI License #2024198)

GOD RENEWS US

Call to Confession: *1 John 3:16-18, NRSV*

Leader: We know love by this, that he laid down his life for us--and we ought to lay down our lives for one another. How does God's love abide in anyone who has the world's goods and sees a brother or sister in need and yet refuses help? Little children, let us love, not in word or speech, but in truth and action.

Prayer of Confession: *Worship Sourcebook 2nd Edition, Section N.2.2.2*

Leader: If, at times, we deny you, God forgive. When the risks of discipleship are high, and we are nowhere to be found:

People: God forgive.

Leader: When we wash our hands of responsibility:

People: God forgive.

Leader: When we cast our lot with powerful oppressors and seek to buy freedom with silver:

People: God forgive.

Leader: When fear keeps us from witnessing to your truth, or prejudice keeps us from believing it:

People: God forgive.

Leader: In the bright light of Easter morning, O God, our sin is exposed, and your grace is revealed.

People: Tender God, raise us in your love so that, with joy, we may witness to your awesome deeds, in the name of Jesus, the risen one. Amen

Assurance of Pardon and Call to Holy Living: *1 John 3:19-24, NRSV*

Leader: And by this we will know that we are from the truth and will reassure our hearts before him whenever our hearts condemn us; for God is greater than our hearts, and he knows everything. Beloved, if our hearts do not condemn us, we have boldness before God; and we receive from him whatever we ask, because we obey his commandments and do what pleases him. And this is his commandment, that we should believe in the name of his Son Jesus Christ and love one another, just as he has commanded us. All who obey his commandments abide in him, and he abides in them. And by this we know that he abides in us, by the Spirit that he has given us.

Song: Hymnal #691 Amazing Grace (Public Domain)

Prayer of Thanksgiving and Intercession | George Van Kampen

GOD SPEAKS WITH US

First Reading: *Acts 4:5-12*

Leader: This is the Word of the Lord.

People: Thanks be to God!

The Psalm: *Psalm 23*

Leader: This is the Word of the Lord.

People: Thanks be to God!

Second Reading: *1 John 3:16-24*

Leader: This is the Word of the Lord.

People: Thanks be to God!

Gospel Reading: John 10:11-18

Leader: This is the Word of the Lord.

People: Thanks be to God!

Message: Love in Action

Prayer

* **Song: Multiply Your Love** (CCLI Song #3278422 / CCLI License #2024198)

GOD RECEIVES OUR OFFERINGS

Offering: First Offering: First Hamilton CRC Budget

Second Offering: GEMS Girls' Clubs

Ways to give:

- 1) **PAR (Pre-Authorized Remittance):** (to get set up with PAR, please email office@firsthamilton.ca)
- 2) **CanadaHelps.org:** <https://www.canadahelps.org/en/charities/first-hamilton-christian-reformed-church/>
(please put a note with designation details in the message area)
- 3) Or, by **mailing** a cheque to 195 Charlton Ave W. Hamilton, ON L8P 2C9

ANNOUNCEMENTS

GOD SENDS US

* Blessing

* **Song: #938 My Friends, May You Grow in Grace** (permission sought)

Postlude: *The Blessing* (CCLI Song #7147007 / CCLI License #2024198)

Lord Most High

This system contains the first two measures of the song. The key signature has three sharps (F#, C#, G#) and the time signature is 6/8. The music is written for a treble and bass clef. Above the staff, there are four chord symbols: E, Esus, E, and Esus. The lyrics are: "From the ends of the earth, (From the) hearts of the weak, From the ends of the earth, From the hearts of the weak, from the from the".

This system contains the next two measures. The chord symbols are Bsus, B, Bsus, and B. The lyrics are: "depths of the sea, shouts of the strong, from the from the depths of the sea, from the shouts of the strong, from the from the".

This system contains the next two measures. The chord symbol is C#m. The lyrics are: "heights of the heav - ens from the heights of the heav - ens your lips of all peo - ple from the lips of all peo - ple this".

This system contains the final two measures. The first measure has chord symbols A, E, Bsus, and B. The second measure has chord symbols A, E, A, and B. The lyrics are: "name be praised. From the song we raise, Lord."

E A B E

7 Through-out the end-less ag - es you will be
Ex - alt - ed in ev - ery na - tion, sov - ereign of

A B C#m A 1 Bsus B

crowned with prais - es, Lord Most High.
all cre - a - tion, Lord Most

2 Bsus E/B A E A E

High, be mag - ni - fied, be mag - ni - fied,

A E B D.S. E Fine

(*From the)

*To be played only if returning to beginning.

Mighty to Save

B \flat 2 F Dm7 Csus C

(grave.)

1 ♪ Ev-ery-one needs com-pas - sion, a love that's nev - er fail-
 2 So take_ me as you find me, ♪ all my fears and fail-

Dm C B \flat 2

- ing; let mer - cy fall on me. ♪
 - ures; ♪ fill my life a - gain. I

F Dm7

Ev - ery-one needs for-give - ness, the kind - ness of a Sav - ior,
 give_ my life to fol - low ♪ ev-ery-thing I be-lieve in.

Csus C B^b C B^b/D C/E

the hope of na - tions.
Now I sur - ren - der, yes, I sur - ren - der.

Detailed description: This system contains the first two lines of the song. The top staff is the vocal line in a soprano clef with a key signature of one flat (Bb). The lyrics are: "the hope of na - tions. Now I sur - ren - der, yes, I sur - ren - der." Above the vocal line are six chord symbols: Csus, C, Bb, C, Bb/D, and C/E. The piano accompaniment consists of two staves: a right-hand staff in a treble clef and a left-hand staff in a bass clef. The piano part features a steady eighth-note accompaniment in the right hand and a simple bass line in the left hand.

Refrain
F2 C B^b2 F2

Sav - ior, he can move the moun - tains; my God is might - y to save, he is

Detailed description: This system contains the first two lines of the refrain. The top staff is the vocal line in a soprano clef. The lyrics are: "Sav - ior, he can move the moun - tains; my God is might - y to save, he is". Above the vocal line are four chord symbols: F2, C, Bb2, and F2. The piano accompaniment consists of two staves: a right-hand staff in a treble clef and a left-hand staff in a bass clef. The piano part features a steady eighth-note accompaniment in the right hand and a simple bass line in the left hand.

Dm C F2 C2

might - y to save. For - ev - er au - thor of sal - va - tion, he rose and

Detailed description: This system contains the last two lines of the refrain. The top staff is the vocal line in a soprano clef. The lyrics are: "might - y to save. For - ev - er au - thor of sal - va - tion, he rose and". Above the vocal line are four chord symbols: Dm, C, F2, and C2. The piano accompaniment consists of two staves: a right-hand staff in a treble clef and a left-hand staff in a bass clef. The piano part features a steady eighth-note accompaniment in the right hand and a simple bass line in the left hand.

B \flat 2 F2 Third time to Coda 1 Dm C

con-quer-ed the grave; Je - sus con-quer-ed the grave.

2 Dm C B \flat F

con-quer-ed the grave. Shine your light and let the whole world

C B \flat F

see we're sing - ing for the glo - ry of the ris - en

1 C

2 C *D.S. al Coda*

King. Je - sus! King.

Coda

Dm C B \flat 2

con-quer-ed the grave.

F B \flat 2 C F

You are might-y to save.

Amazing Grace

G Em C G

1 A - maz - ing grace— how sweet the sound— that
2 'Twas grace that taught my heart to fear, and
3 The Lord has prom - ised good to me, his

D7 G/B D/A G

saved a wretch like me! I once was lost, but
grace my fears re - lieved; how pre - cious did that
word my hope se - cures; he will my shield and

C G Em G/D D7 G

now am found, was blind, but now I see.
grace ap - pear the hour I first be - lieved!
por - tion be as long as life en - dures.

4 Through many dangers, toils, and snares
I have already come;
'tis grace hath brought me safe thus far,
and grace will lead me home.

5 When we've been there ten thousand years,
bright shining as the sun,
we've no less days to sing God's praise
than when we'd first begun.

For an alternate arrangement see 670

Words: st. 1-4 John Newton, 1779, st. 5 *A Collection of Sacred Ballads*, 1790, P.D.

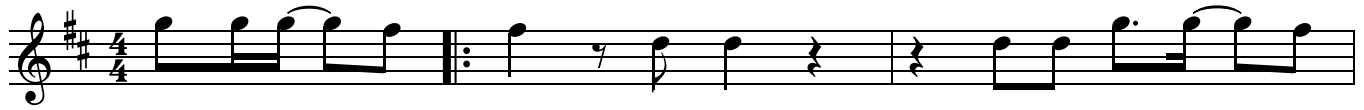
Music (NEW BRITAIN 8.6.8.6): *Virginia Harmony*, 1831; adapt. and harm. Edwin O. Excell, 1900, P.D.

Multiply Your Love

Words and Music by
Andy Park

♩ = 92

☞ VERSE
D



1. Mul - ti - ply _ Your love through us to the lost and _ the
 (2. Mul - ti - ply _ Your) love through me to some - one _ in
 (3. Mul - ti - ply _ Your) church through us to the ends of _ the

3

Bm⁷

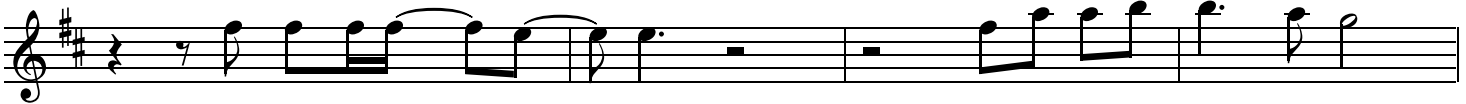


least; Let us be _ Your heal - ing hands,
 need; Help me, Lord, _ to free - ly give
 earth. Where there's on - ly bar - ren - ness,

6

A^{sus}

G



Your in - stru - ments _ of _ peace. May our sin - gle pur - pose be
 this grace that I've _ re - ceived. Let my sin - gle pur - pose be
 let us see _ new _ birth. Use us as Your la - bour - ers

10

Bm⁷

Last time to Coda ☼
A^{sus}



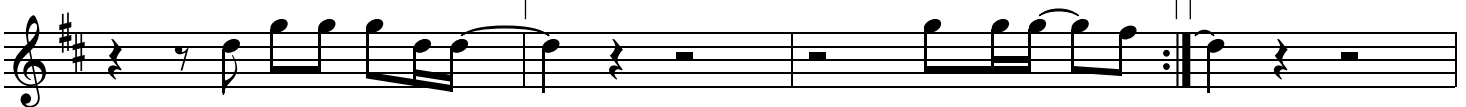
to im - i - tate _ Your _ life; Through our sim - ple words and deeds
 to im - i - tate _ Your _ life; Through my sim - ple words and deeds
 work - ing side _ by _ side; Let us see Your har - vest come,

14

G

1.
D

2.
D



let love be mul - ti - plied. _ 2. Mul - ti - ply _ Your _
 let love be mul - ti - plied. _

CHORUS

18 Bm G D

Let us see Your king-dom come to the poor — and

22 Asus Bm G D

bro-ken ones; Let us see a might-y flood — of jus - tice and

26 Asus G Asus D

mer - cy, O Je - sus. Let love be mul - ti - plied, _____

30 D.S. al Coda

let love be mul - ti - plied. — 3. Mul - ti - ply — Your

33 Coda D **CHORUS**

let love be mul - ti - plied. — Let us see Your

36 G D Asus Bm

king-dom come to the poor — and bro-ken ones; Let us see a

40 G D Asus G

might - y flood — of jus - tice and mer - cy, O Je - sus.

44 A^{sus}

Let love be mul - ti - plied. _

Let love be mul - ti - plied. _

BRIDGE

48

Let love be mul - ti - plied. _____

Let love be mul - ti - plied. .

51 D

Let love be mul - ti - plied. _____

ENDING

54 G D $N.C.$

Let love be mul - ti - plied. _

Mul - ti - ply _ Your love through us,

58

mul - ti - ply _ Your _ love, _

mul - ti - ply _ Your

mul - ti - ply _ Your

62 D D^{sus} D D^{sus} D D^{sus}

love through us,

mul - ti - ply _ Your _ love, _____

mul - ti - ply _ Your

66 D D^{sus} D D^{sus} D D^{sus}

mul - ti - ply _ Your love,

mul - ti - ply _ Your _ love, _____

70

The image shows a musical score for a guitar. It consists of a single staff in treble clef with a key signature of one sharp (F#). The music is divided into two measures. The first measure starts with a whole rest, followed by a quarter note D4, and then a series of eighth notes: D4, E4, F#4, G4, A4, B4, A4, G4, F#4, E4, D4. Above the first two notes are the chord symbols 'D' and 'Dsus'. The second measure begins with a double bar line and a repeat sign. Above the first measure of the second section is a '2.' indicating a second ending. The notes in the second measure are: D4 (quarter), E4 (quarter), F#4 (quarter), G4 (quarter), A4 (quarter), B4 (quarter), A4 (quarter), G4 (quarter), F#4 (quarter), E4 (quarter), D4 (quarter). Above these notes are the chord symbols 'D', 'Dsus', 'D', 'Dsus', and 'D'. The piece concludes with a final whole note D4.

mul - ti - ply _ Your _ love. _____

My Friends, May You Grow in Grace

2 PETER 3:18

D A Bm

My friends, may you grow in grace and in the

G A D A

knowl - edge of our Lord and Sav - ior. My

D A Bm

friends, may you grow in grace and in the

G A D A

knowl - edge of Je - sus Christ. To

D A Bm7 A

God be the glo - ry, now and for - ev - er,

G2 A D A

now and for-ev - er, a - men. To

Detailed description: This system contains the first two staves of music. The treble staff has a key signature of two sharps (F# and C#) and a 2/4 time signature. It features a melody with notes G4, A4, B4, C5, B4, A4, G4, F#4, E4, D4, C4. Chords G2, A, D, and A are indicated above the staff. The bass staff has a key signature of two sharps and a 2/4 time signature, with a bass line of notes G2, A2, B2, C3, D3, E3, F#3, G3, A3, B3, C4, D4. The lyrics 'now and for-ev - er, a - men. To' are written below the treble staff.

D A Bm7 A

God be the glo - ry, now and for - ev - er,

Detailed description: This system contains the second two staves of music. The treble staff has a key signature of two sharps and a 2/4 time signature. It features a melody with notes G4, A4, B4, C5, B4, A4, G4, F#4, E4, D4, C4. Chords D, A, Bm7, and A are indicated above the staff. The bass staff has a key signature of two sharps and a 2/4 time signature, with a bass line of notes G2, A2, B2, C3, D3, E3, F#3, G3, A3, B3, C4, D4. The lyrics 'God be the glo - ry, now and for - ev - er,' are written below the treble staff.

G A D

now and for - ev - er, a - men.

Detailed description: This system contains the final two staves of music. The treble staff has a key signature of two sharps and a 2/4 time signature. It features a melody with notes G4, A4, B4, C5, B4, A4, G4, F#4, E4, D4, C4. Chords G, A, and D are indicated above the staff. The bass staff has a key signature of two sharps and a 2/4 time signature, with a bass line of notes G2, A2, B2, C3, D3, E3, F#3, G3, A3, B3, C4, D4. The lyrics 'now and for - ev - er, a - men.' are written below the treble staff.